

Alogliptin

CHROMATOGRAPHIC CONDITIONS

Column: CHIRALPAK® IF-3 [4.6 x 250mm, 3µm]

Part No: 86525

Mobile phase: Ethanol: Methanol: DEA (70/30/0.1, v/v/v)

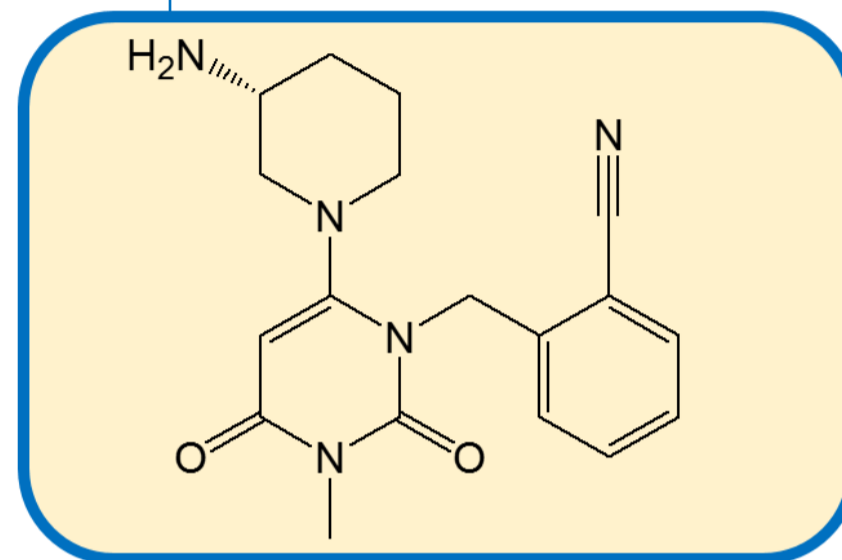
Flowrate: 0.7 mL/min

Column Oven Temperature: 25 °C

UV detection: 275 nm

Diluent: Mobile phase

Concentration: 0.5 mg/mL.



SEPARATION PERFORMANCE

tR ₁ :	9.87	N ₁ :	9900	T ₁ :	1.5	
tR ₂ :	11.19	N ₂ :	8950	T ₂ :	1.5	Rs: 3.02

