

## Colchicine

### CHROMATOGRAPHIC CONDITIONS

Column: CHIRALPAK® IG-3 [4.6 x 250 mm, 3 µm]  
Part No: 87525

Mobile phase: n-Hexane : Ethanol : Methanol : DEA  
(70/20/10/0.1, v/v/v/v)

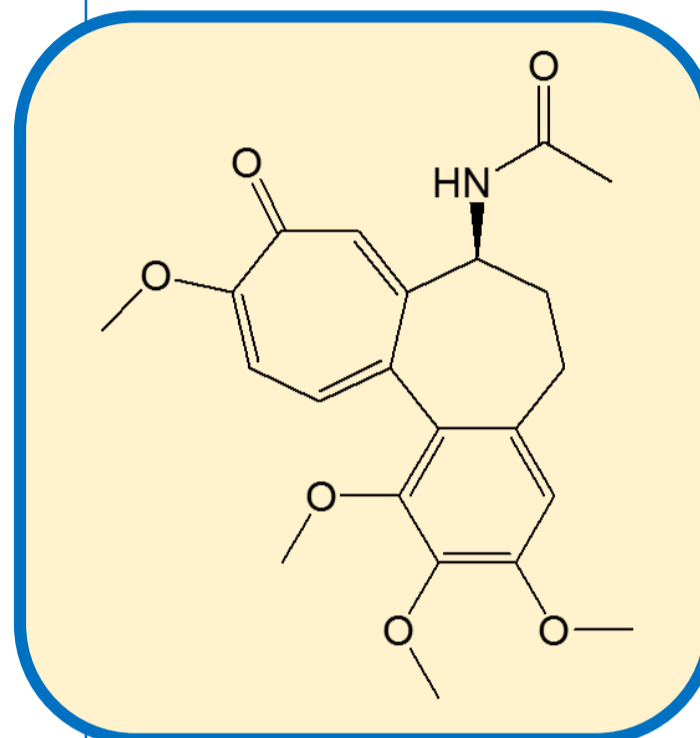
Flowrate: 1.0 mL/min

Column Oven Temperature: 40 °C

UV Detection: 245 nm

Diluent: Ethanol

Sample Concentration: 1.0 mg/mL



### SEPARATION PERFORMANCE

$tR_1$ : 9.1	$N_1$ : 4776	$T_1$ : 1.3	
$tR_2$ : 10.6	$N_2$ : 4980	$T_2$ : 1.5	$R_s$ : 2.64

