

Etomidate

CHROMATOGRAPHIC CONDITIONS

Column: CHIRALPAK® ID [4.6 x 250 mm, 5 µm]
Part No: 84325

Mobile phase: n-Hexane : Ethanol : Methanol : DEA
(90/05/05/0.1, v/v/v/v)

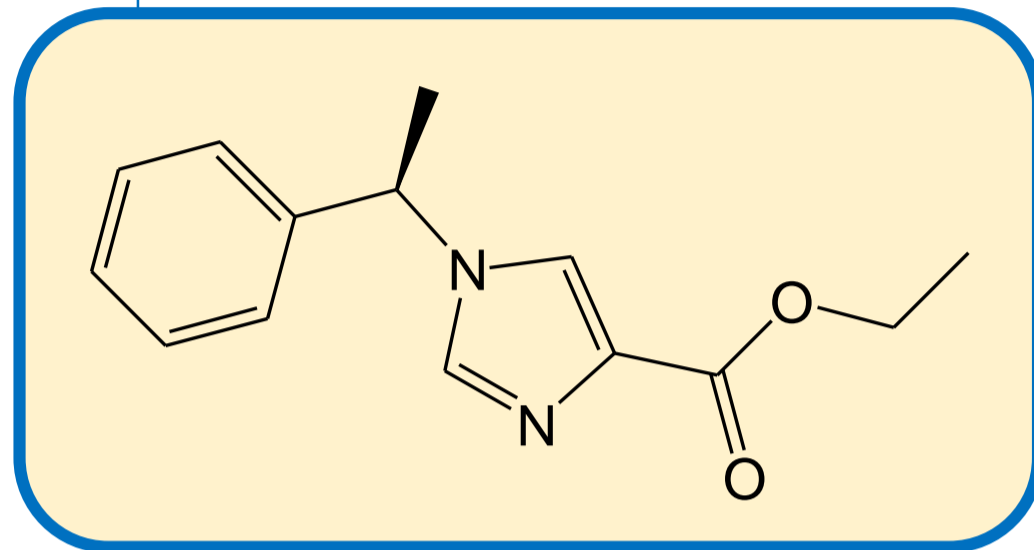
Flowrate: 1.0 mL/min

Column Oven Temperature: 25 °C

UV Detection: 240 nm

Diluent: Methanol : Mobile phase (1:9)

Sample Concentration: 0.5 mg/mL



SEPARATION PERFORMANCE

t_{R1} : 7.1	N_1 : 12444	T_1 : 1.3	
t_{R2} : 8.4	N_2 : 7376	T_2 : 1.7	R_s : 4.0

