

Pralatrexate

CHROMATOGRAPHIC CONDITIONS

Column: CHIRALPAK® ID [4.6 x 250 mm, 5 µm]
Part No: 84325

Mobile phase: n-hexane : Ethanol : Methanol : TFA : n-Bu-amine
(80/10/10/0.5/0.1, v/v/v/v/v)

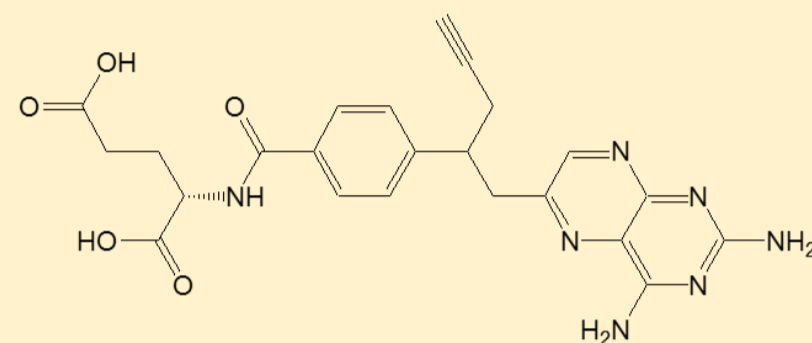
Flowrate: 1.0 mL/min

Column Oven Temperature: 40 °C

UV Detection: 242 nm

Diluent: add 20µL of n-Butyl amine and mix with 100µL of Methanol
and 100µL Ethanol and then sonicate and make up with Mobile phase

Sample Concentration: 0.5 mg/mL



SEPARATION PERFORMANCE

t_{R1} : 17.5	N_1 : 5953	T_1 : 1.3	
t_{R2} : 20.4	N_2 : 4896	T_2 : 1.7	R_s : 2.8

