

## Sitagliptin

### CHROMATOGRAPHIC CONDITIONS

Column: CHIRALPAK® IE [4.6 x 250 mm, 5 µm]  
Part No: 85325

Mobile phase: MtBE : ACN : Methanol : DEA  
(80/10/10/0.1, v/v/v/v)

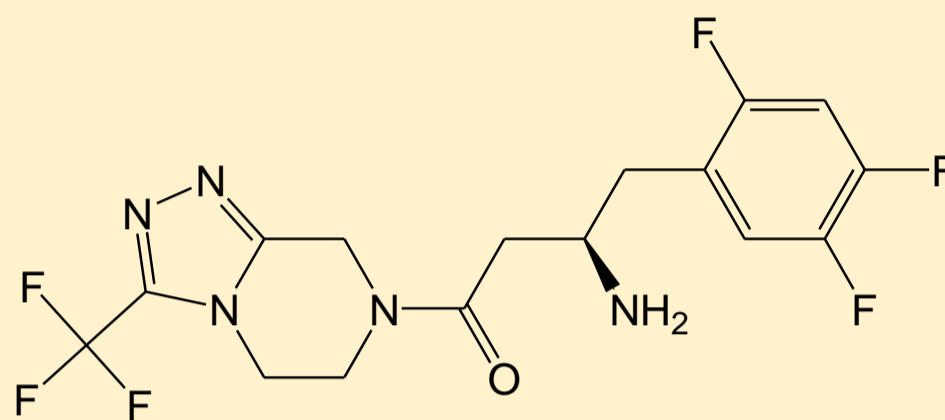
Flowrate: 1.0 mL/min

Column Oven Temperature: 25 °C

UV Detection: 264 nm

Diluent: Methanol : Mobile phase (1:1)

Sample Concentration: 3.0 mg/mL



### SEPARATION PERFORMANCE

tR <sub>1</sub> : 6.4	N <sub>1</sub> : 8481	T <sub>1</sub> : 1.1	
tR <sub>2</sub> : 7.8	N <sub>2</sub> : 7598	T <sub>2</sub> : 1.5	Rs: 4.2

