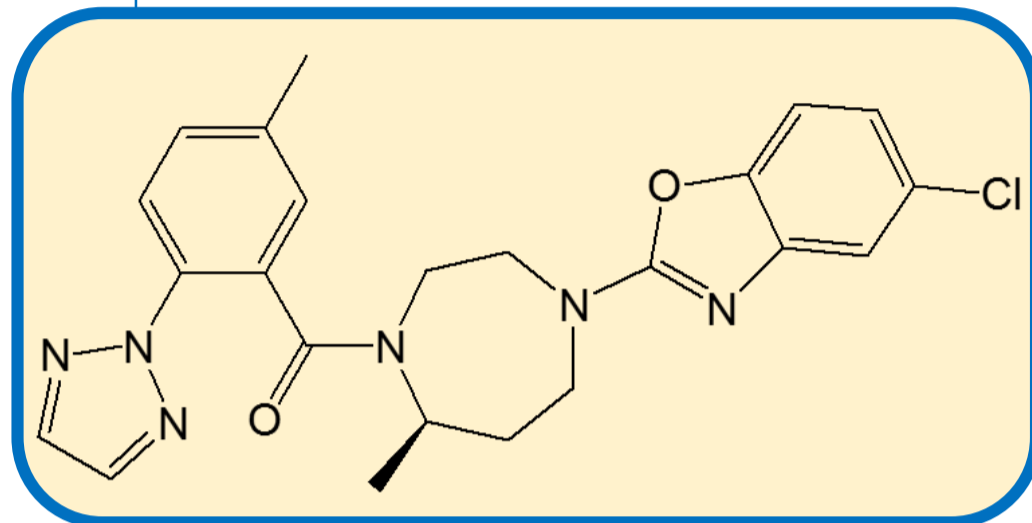


Suvorexant

CHROMATOGRAPHIC CONDITIONS

Column: CHIRALPAK® IG [4.6 x 250 mm, 5 µm]
Part No: 87325
Mobile phase: Methanol : ACN : EDA (70/30/0.1, v/v/v)
Flowrate: 1.0 mL/min
Column Oven Temperature: 40 °C
UV Detection: 254 nm
Diluent: Mobile phase
Sample Concentration: 1.0 mg/mL



SEPARATION PERFORMANCE

t_{R_1} : 5.98	N_1 : 3500	T_1 : 1.2	
t_{R_2} : 9.43	N_2 : 1720	T_2 : 1.2	R_s : 5.26

