

## Pomalidomide

### CHROMATOGRAPHIC CONDITIONS

Column: CHIRALPAK® IG-3 [4.6 x 150 mm, 3 µm]

Part No: 87524

Mobile phase: 10 mM ammonium bicarbonate in  
[(Water: ACN) (5/95, v/v)]

Flowrate: 1.0 mL/min

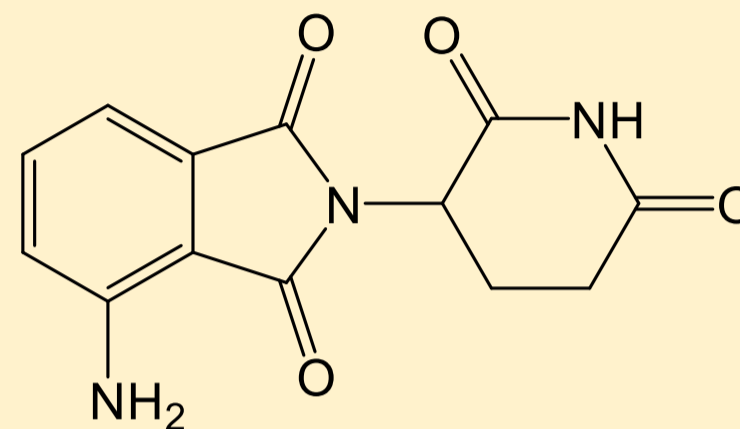
Column Oven Temperature: 40 °C

UV Detection: 225 nm

Sample Concentration: 0.5 mg/mL

Diluent: MeOH : Mobile phase (1:1)

Injection Volume : 10µL



### SEPARATION PERFORMANCE

$t_{R1}$ : 4.9	$N_1$ : 6838	$T_1$ : 1.1	
$t_{R2}$ : 7.6	$N_2$ : 6745	$T_2$ : 1.2	$R_s$ : 8.7

