

Afatinib

CHROMATOGRAPHIC CONDITIONS

Column: CHIRALPAK® IE [4.6 x 250 mm, 5 µm]

Part No: 85325

Mobile phase: MTBE : Methanol : DEA (20/80/0.1,v/v/v)

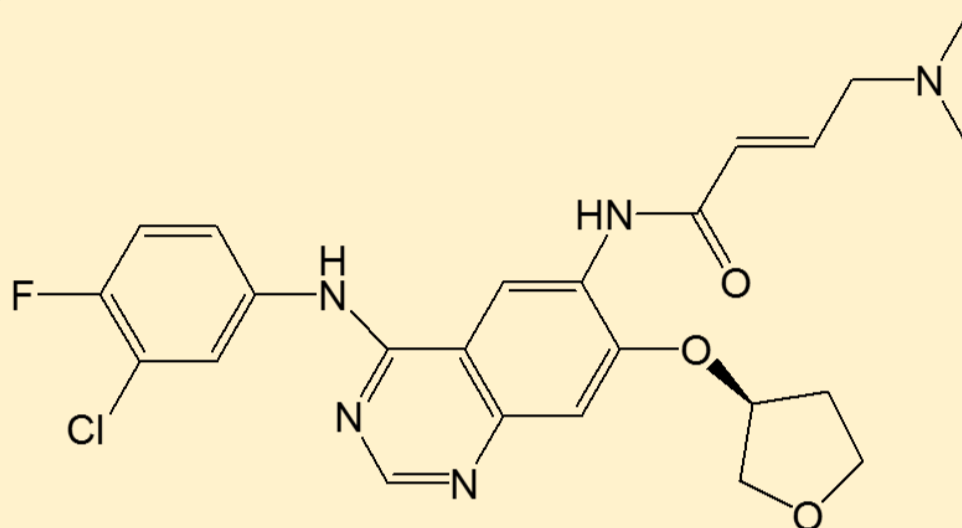
Flowrate: 0.7 mL/min

Column Oven Temperature: 15 °C

UV Detection: 340 nm

Diluent: Mobile phase

Sample Concentration: 1.0 mg/mL



SEPARATION PERFORMANCE

t_{R1} : 15.2	N_1 : 9188	T_1 : 1.2	
t_{R2} : 17.0	N_2 : 9195	T_2 : 1.2	R_s : 2.5

