

## Apremilast

### CHROMATOGRAPHIC CONDITIONS

Column: CHIRALPAK® ID [4.6 x 250 mm, 5 µm]  
Part No: 84325

Mobile phase: MTBE : Ethanol : DEA (90/10/0.1, v/v/v)

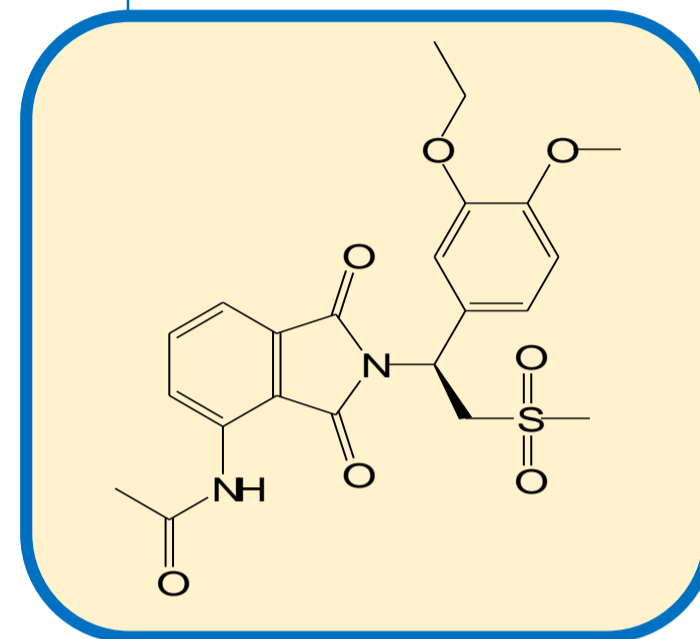
Flowrate: 1.0 mL/min

Column Oven Temperature: 25 °C

UV Detection: 235 nm

Diluent: Mobile phase

Sample Concentration: 1.0 mg/mL



### SEPARATION PERFORMANCE

$t_{R_1}$ : 7.3	$N_1$ : 5953	$T_1$ : 1.3	
$t_{R_2}$ : 9.4	$N_2$ : 4896	$T_2$ : 1.4	$R_s$ : 5.2

