

## Citalopram

### CHROMATOGRAPHIC CONDITIONS

Column: CHIRALPAK® IC-3 [4.6 x 250 mm, 3 µm]  
Part No: 83525

Mobile phase: n-Hexane:MTBE:iso propyl amine  
(55/45/0.1, v/v/v)

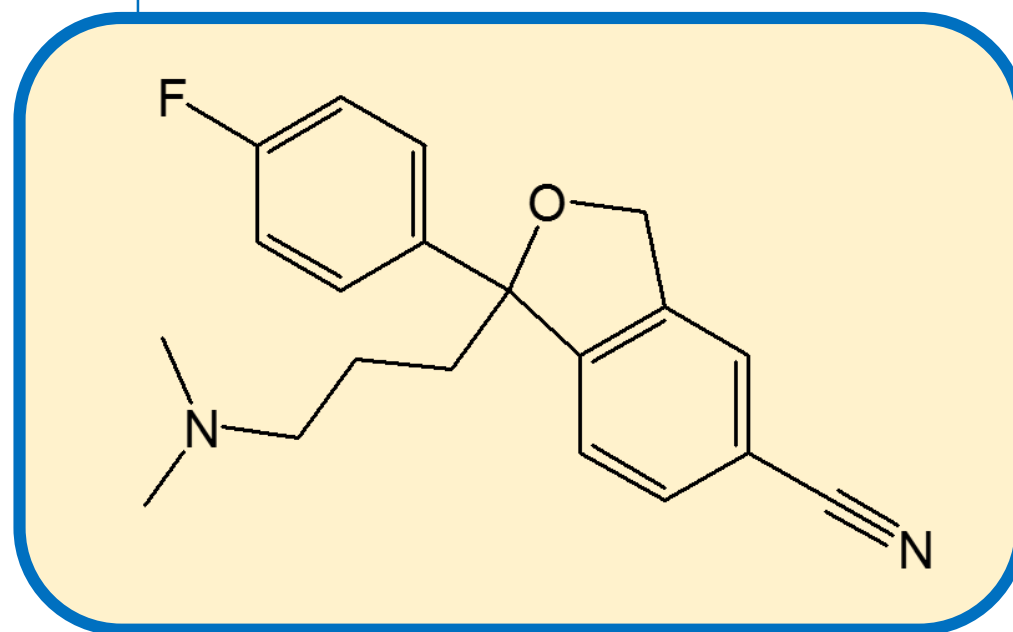
Flowrate: 1.0 mL/min

Column Oven Temperature: 40 °C

UV Detection: 230 nm

Diluent: Ethanol : MTBE : n-Hexane (2:4:4)

Sample Concentration: 1.0 mg/mL



### SEPARATION PERFORMANCE

$t_{R1}$ : 14.6	$N_1$ : 7000	$T_1$ : 1.4	
$t_{R2}$ : 17.6	$N_2$ : 6500	$T_2$ : 1.5	$R_s$ : 4.0

