

Ephedrine

CHROMATOGRAPHIC CONDITIONS

Column: CHIRALPAK® ZWIX(-) [4.0 x 250 mm, 3 µm]

Part No: 52515

Mobile phase: 25 mM 2-amino-1-butanol in

(Methanol: ACN: H₂O 49/49/2, v/v/v)

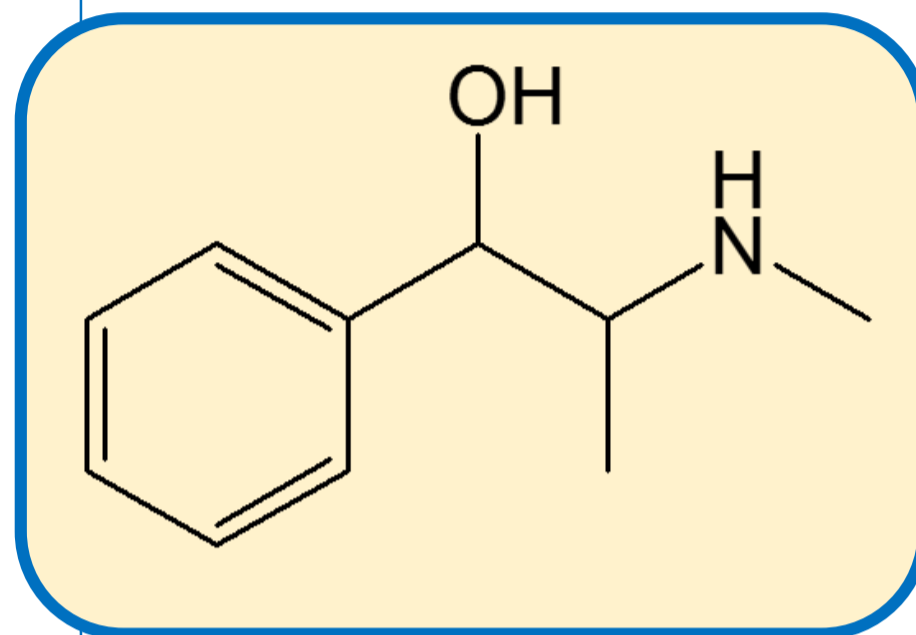
Flowrate: 1.0 mL/min

Column Oven Temperature: 40 °C

UV Detection: 225 nm

Diluent: Mobile phase

Sample Concentration: 1.0 mg/mL



SEPARATION PERFORMANCE

tR ₁ : 9.4	N ₁ : 19378	T ₁ : 1.8	
tR ₂ : 10.0	N ₂ : 9640	T ₂ : 2.5	Rs: 1.6
tR ₃ : 11.7	N ₃ : 7626	T ₃ : 2.4	Rs: 3.7
tR ₄ : 13.0	N ₄ : 19177	T ₄ : 1.5	Rs: 2.9

