

Labetalol

CHROMATOGRAPHIC CONDITIONS

Column: CHIRALPAK® ZWIX(+) [4.0 x 250 mm, 3 µm]

Part No: 51515

Mobile phase: 12.5mM TEA in (Methanol:THF:H₂O 49/49/02, v/v/v)

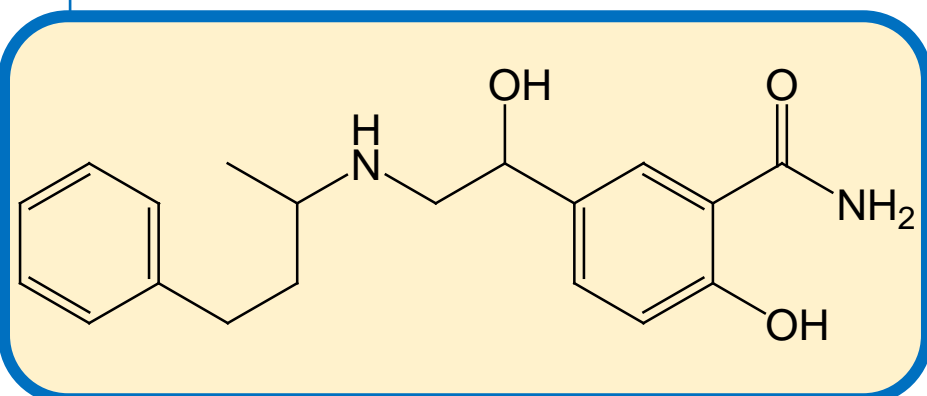
Flowrate: 1.0 mL/min

Column Oven Temperature: 25 °C

UV Detection: 310 nm

Diluent: Mobile phase

Sample Concentration: 3.0 mg/mL



SEPARATION PERFORMANCE

tR ₁ : 7.9	N ₁ : 7200	T ₁ : 0.9	
tR ₂ : 9.0	N ₂ : 7200	T ₂ : 0.8	Rs: 2.7
tR ₃ : 10.5	N ₃ : 8000	T ₃ : 0.9	Rs: 3.4
tR ₄ : 11.6	N ₄ : 7900	T ₄ : 0.9	Rs: 2.2

