

Levothyroxine

CHROMATOGRAPHIC CONDITIONS

Column: CHIRALPAK® ZWIX(-) [3.0 x 250 mm, 3 µm]
Part No: 52585

Mobile phase: 50mM Formic acid+25mM DEA in
(Methanol:THF:H₂O 45/50/05, v/v/v)

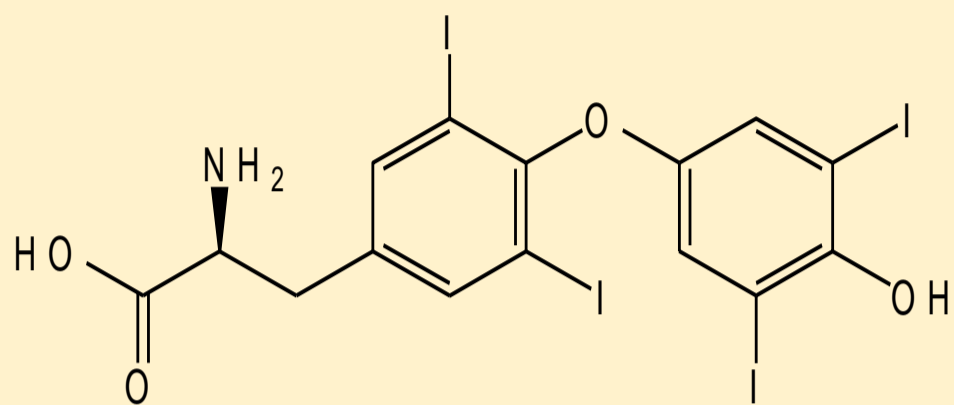
Flowrate: 0.5 mL/min

Column Oven Temperature: 25 °C

UV Detection: 230 nm

Diluent: Methanol

Sample Concentration: 0.2 mg/mL



SEPARATION PERFORMANCE

tR ₁ : 8.0	N ₁ : 4600	T ₁ : 1.8	
tR ₂ : 10.2	N ₂ : 4400	T ₂ : 1.9	Rs: 3.91

