

Linagliptin

CHROMATOGRAPHIC CONDITIONS

Column: CHIRALPAK® AD-3 [4.6 x 250 mm, 3 µm]

Part No: 19525

Mobile phase: Ethanol : ethanol amine (100:0.3, v/v)

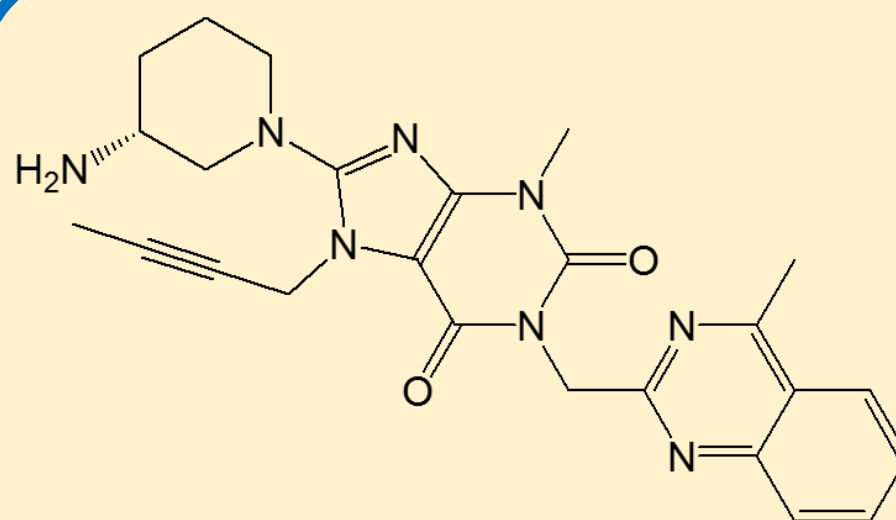
Flowrate: 0.7 mL/min

Column Oven Temperature: 25 °C

UV Detection: 295 nm

Diluent: Mobile phase

Sample Concentration: 1.0 mg/mL



SEPARATION PERFORMANCE

tR ₁ : 9.9	N ₁ : 2747	T ₁ : 1.6	
tR ₂ : 12.6	N ₂ : 2121	T ₂ : 1.5	Rs: 2.9

