

## Linagliptin

### CHROMATOGRAPHIC CONDITIONS

Column: CROWNPAK®CR-I(+) [3.0 x 150 mm, 5 µm]

Part No: 53784

Mobile phase: aq. Perchloric acid (pH=1.0):ACN (70/30,v/v)

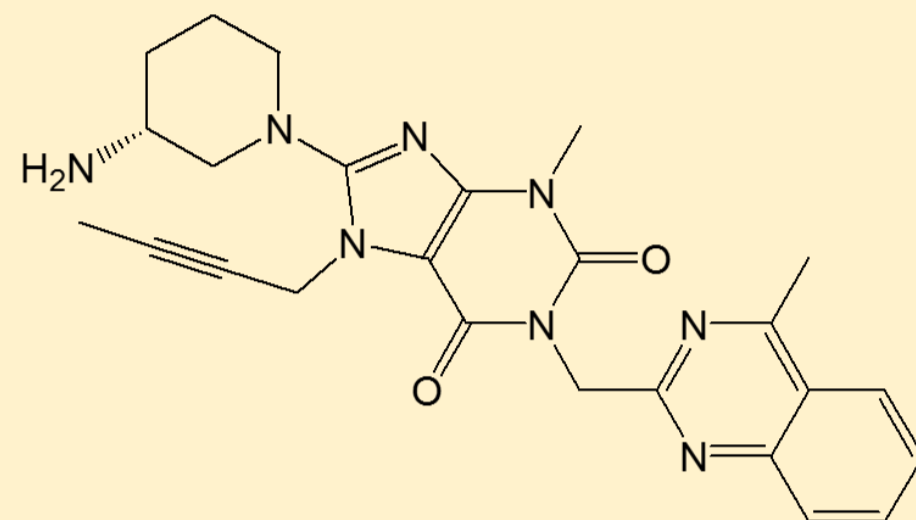
Flowrate: 0.5 mL/min

Column Oven Temperature: 10 °C

UV Detection: 295 nm

Diluent: Mobile phase

Sample Concentration: 1.0 mg/mL



### SEPARATION PERFORMANCE

tR <sub>1</sub> : 16.0	N <sub>1</sub> : 3131	T <sub>1</sub> : 1.3	
tR <sub>2</sub> : 18.4	N <sub>2</sub> : 2972	T <sub>2</sub> : 1.3	Rs: 1.94

