

Pemetrexed disodium

CHROMATOGRAPHIC CONDITIONS

Column: CHIRALPAK® ZWIX(+) [4 x 250mm, 3µm]

Part No: 51515

Mobile phase: 50 mM Formic acid + 25 mM DEA in
(Methanol : Water 98/02, v/v)

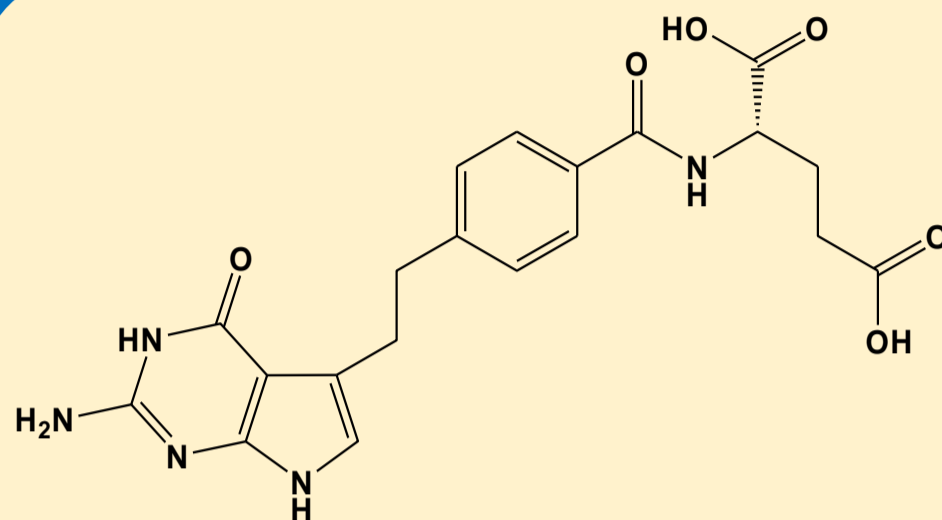
Flowrate: 0.5 mL/min

Column Oven Temperature: 40 °C

UV Detection: 240 nm

Diluent: Methanol : Water (98/02, v/v)

Sample Concentration: 1.0 mg/mL



SEPARATION PERFORMANCE

tR ₁ : 11.3	N ₁ : 11439	T ₁ : 1.6	
tR ₂ : 13.6	N ₂ : 10130	T ₂ : 2.1	Rs: 4.73

