

## Saxagliptin

### CHROMATOGRAPHIC CONDITIONS

Column: CHIRALPAK® ID [4.6 x 250 mm, 5 µm]  
Part No: 84325

Mobile phase: n-Hexane:EtOH:1,4-Dioxane:Isopropylamine  
(60/20/20/0.1, v/v/v/v)

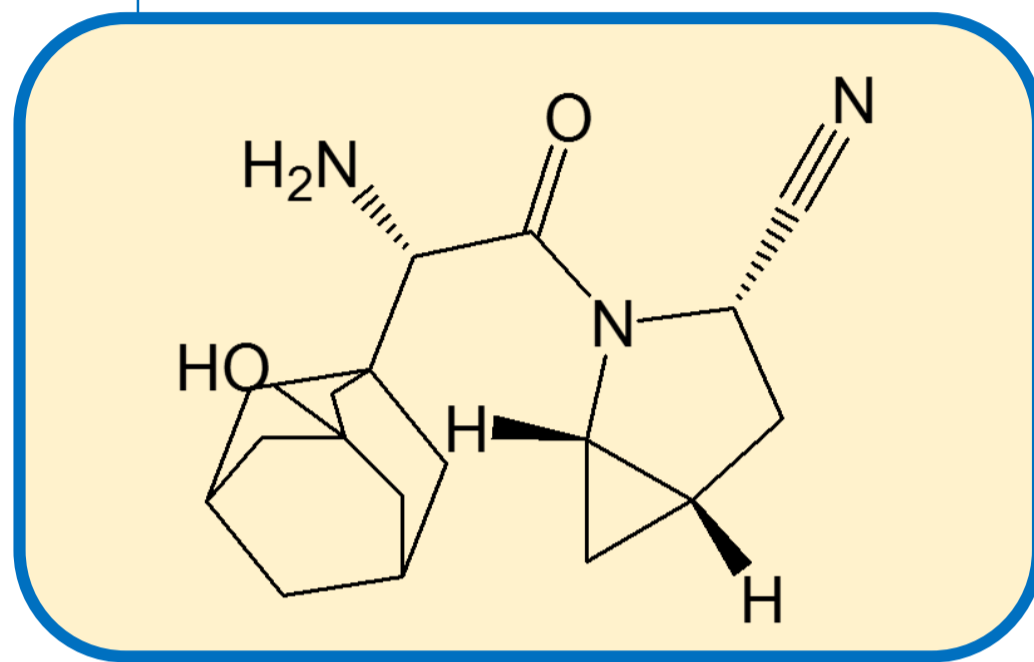
Flowrate: 1.0 mL/min

Column Oven Temperature: 25 °C

UV Detection: 225 nm

Diluent: Mobile phase

Sample Concentration: 1.0 mg/mL



### SEPARATION PERFORMANCE

t <sub>R1</sub> : 7.5	N <sub>1</sub> : 7069	T <sub>1</sub> : 1.1	
t <sub>R2</sub> : 8.8	N <sub>2</sub> : 8034	T <sub>2</sub> : 1.4	Rs: 3.3
t <sub>R3</sub> : 10.4	N <sub>3</sub> : 11286	T <sub>3</sub> : 1.2	Rs: 4.0
t <sub>R4</sub> : 11.1	N <sub>4</sub> : 5927	T <sub>4</sub> : 1.4	Rs: 1.5

