

## Tramadol

### CHROMATOGRAPHIC CONDITIONS

Column: CHIRALPAK® ID [4.6 x 250 mm, 5 µm]

Part No: 84325

Mobile phase: n-Hexane:DCM:IPA:DEA (80/10/10/0.1, v/v/v)

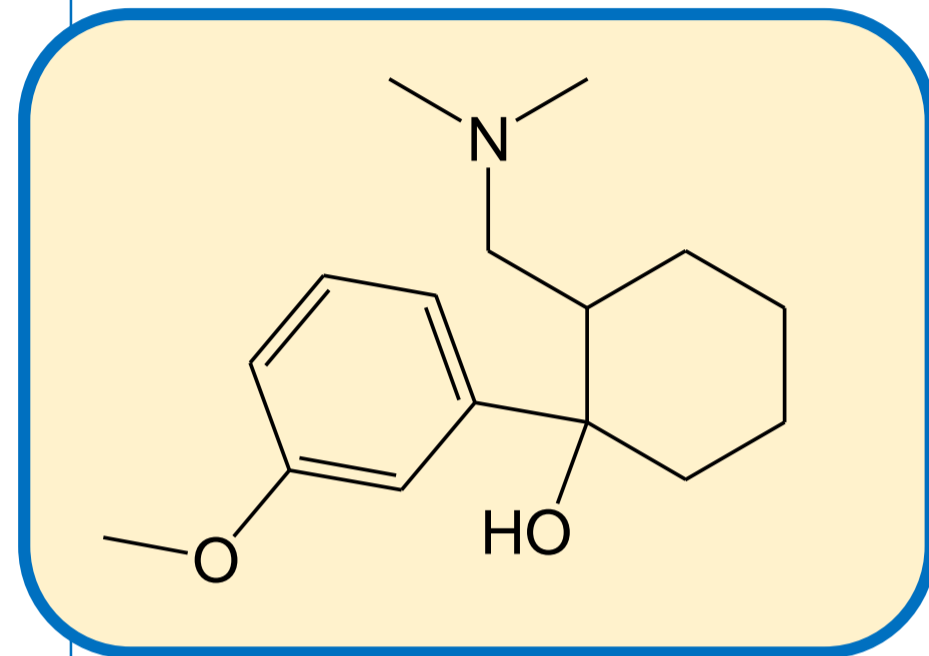
Flowrate: 1.0 mL/min

Column Oven Temperature: 25 °C

UV Detection: 270 nm

Diluent: Mobile phase

Sample Concentration: 1.0 mg/mL



### SEPARATION PERFORMANCE

$t_{R1}$ : 7.7	$N_1$ : 5165	$T_1$ : 1.3	
$t_{R2}$ : 8.8	$N_2$ : 6514	$T_2$ : 1.5	$R_s$ : 2.7

