

Eluxadoline

CHROMATOGRAPHIC CONDITIONS

Column: CHIRALPAK® IC-3 [4.6 x 250 mm, 3 μm]

Part No: 83525

Mobile phase: MTBE : MeOH : ACN : CH₃COOH : Isopropyl amine
(50/15/35/0.1/0.3, v/v/v/v)

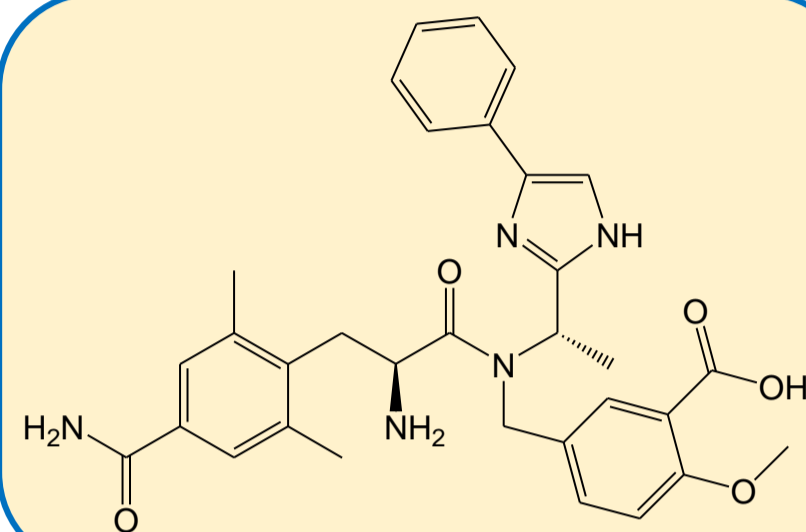
Flowrate: 1.0 mL/min

Column Oven Temperature: 40 °C

UV Detection: 280 nm

Diluent: MTBE : MeOH : TFA (50:50:0.1, v/v/v)

Sample Concentration: 2.0 mg/mL



SEPARATION PERFORMANCE

tR ₁ : 8.2	N ₁ : 1456	T ₁ : 1.1	
tR ₂ : 13.6	N ₂ : 761	T ₂ : 1.3	Rs: 3.8

