

Landiolol

CHROMATOGRAPHIC CONDITIONS

Column: CHIRALPAK® IF [4.6 x 250 mm, 5 µm]

Part No: 86325

Mobile phase: MtBE : MeOH : Ethanolamine (50/50/0.1 v/v/v)

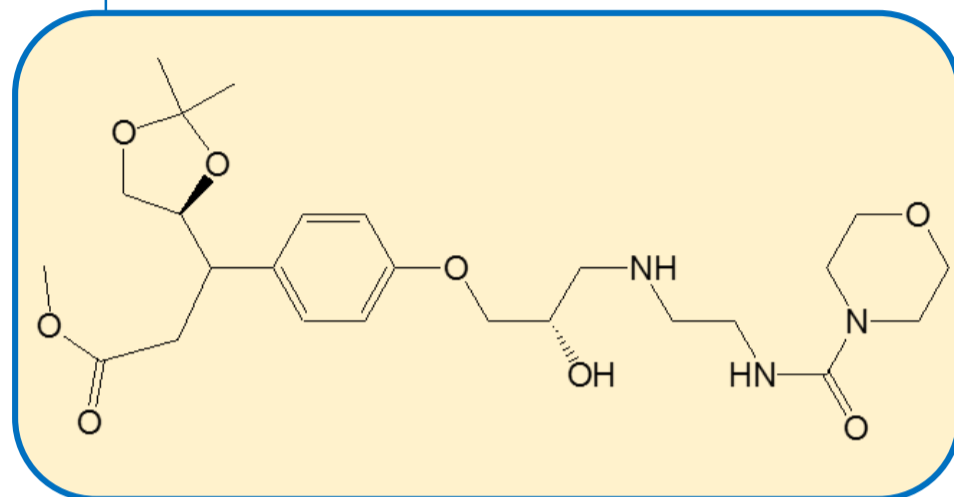
Flowrate: 1.0 mL/min

Column Oven Temperature: 40 °C

UV Detection: 225 nm

Diluent: Mobile phase

Sample Concentration: 2.0 mg/mL



SEPARATION PERFORMANCE

tR_1 : 7.3	N_1 : 4257	T_1 : 1.7	
tR_2 : 9.7	N_2 : 7067	T_2 : 1.2	R_s : 5.2

