

Nebivolol

CHROMATOGRAPHIC CONDITIONS

Column: CHIRALPAK® IA-3 [4.6 x 250 mm, 3 µm]

Part No: 80525

Mobile phase: EtOH : EDA (100/0.1, v/v)

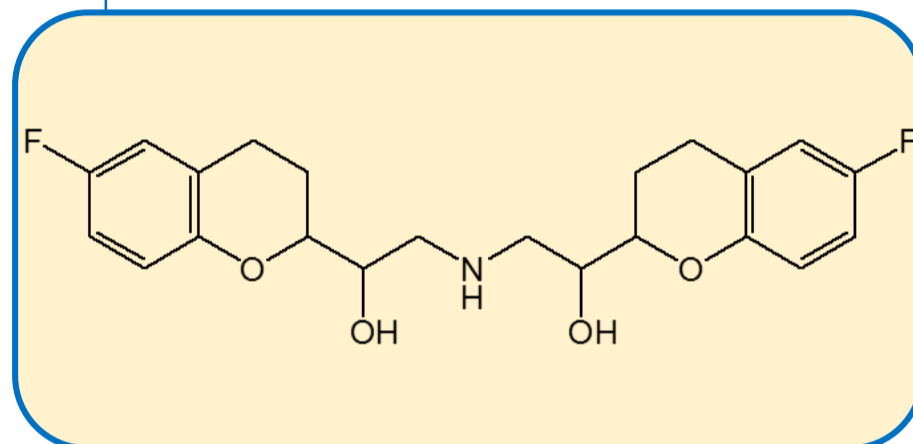
Flowrate: 0.7 mL/min

Column Oven Temperature: 40 °C

UV Detection: 280 nm

Diluent: Mobile phase

Sample Concentration: 1.0 mg/mL



SEPARATION PERFORMANCE

tR_1 : 10.2	N_1 : 11070	T_1 : 1.6	
tR_2 : 12.1	N_2 : 9192	T_2 : 1.7	R_s : 4.4

