

Rosuvastatin

CHROMATOGRAPHIC CONDITIONS

Column: CROWNPAK®IB-3 [4.6 x 250 mm, 3 µm]

Part No: 81525

Mobile phase: n-Hexane: EtOH: IPA: TFA (90: 5: 5: 0.3, v/v/v/v)

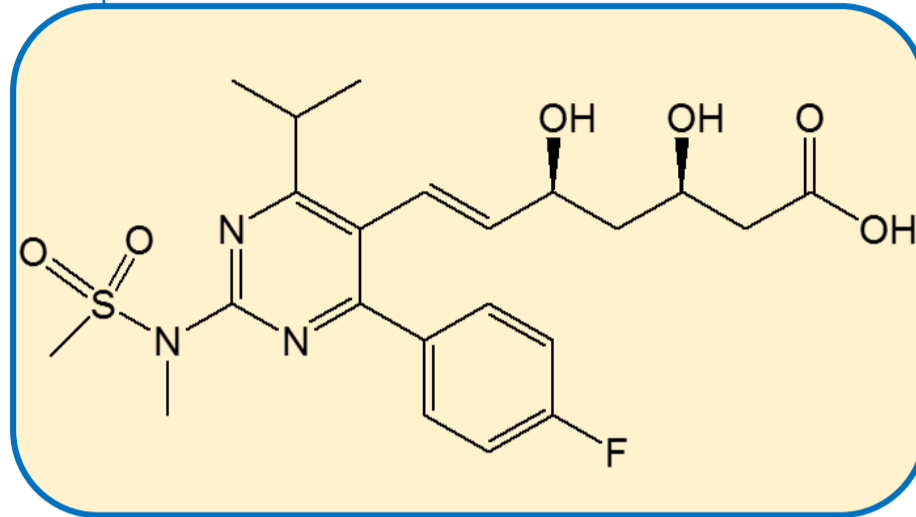
Flowrate: 1.0 mL/min

Column Oven Temperature: 25 °C

UV Detection: 254 nm

Diluent: Chloroform: EtOH: Mobile phase without TFA (3:2:5)

Sample Concentration: 1.0 mg/mL



SEPARATION PERFORMANCE

tR ₁ : 15.9	N ₁ : 12972	T ₁ : 1.5	
tR ₂ : 17.3	N ₂ : 13284	T ₂ : 1.3	Rs: 2.5
tR ₃ : 19.8	N ₃ : 14092	T ₃ : 1.3	Rs: 4.0
tR ₄ : 23.5	N ₄ : 12716	T ₄ : 1.4	Rs: 4.8

