

## Zolmitriptan

### CHROMATOGRAPHIC CONDITIONS

Column: CHIRALPAK®IG-3 [4.6 x 250 mm, 3 µm]

Part No: 87525

Mobile phase: MeOH : DEA (100/0.1, v/v)

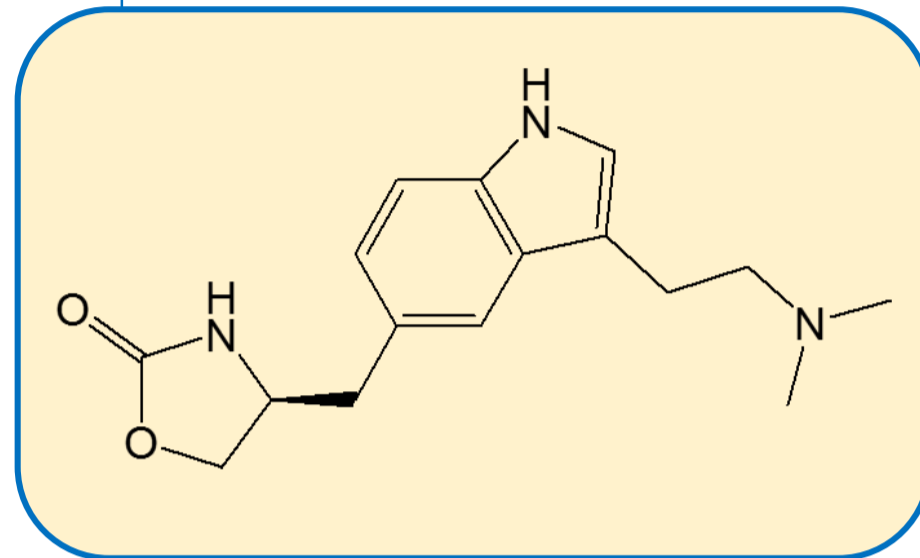
Flowrate: 0.7 mL/min

Column Oven Temperature: 40 °C

UV Detection: 285 nm

Diluent: Mobile phase

Sample Concentration: 1.0 mg/mL



### SEPARATION PERFORMANCE

$tR_1$ : 5.5	$N_1$ : 15326	$T_1$ : 1.6	
$tR_2$ : 6.3	$N_2$ : 16206	$T_2$ : 1.7	$R_s$ : 4.0

