

INSTRUCTION MANUAL FOR CHIRALPAK® IA, IB(N-5), IC, ID, IE, IF, IG and CHIRALPAK IH

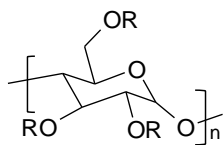
<Normal Phase>

Please read this instruction sheet completely before using these columns

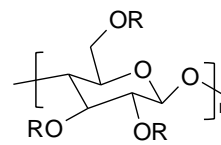
**These columns can also be used in reversed phase mode.
Please refer to the corresponding instruction sheet for details.**

Column description

AMYLOSE-BASED

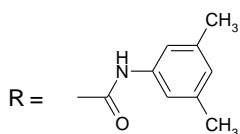


CELLULOSE-BASED



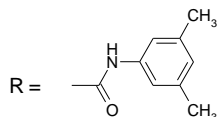
CHIRALPAK® IA

Amylose
tris(3,5-dimethylphenylcarbamate)
immobilized on 5µm silica-gel



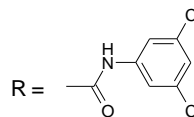
CHIRALPAK® IB & IBN-5

Cellulose
tris(3,5-dimethylphenylcarbamate)
immobilized on 5µm silica-gel



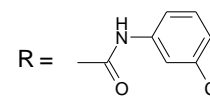
CHIRALPAK® IC

Cellulose
tris(3,5-dichlorophenylcarbamate)
immobilized on 5µm silica-gel



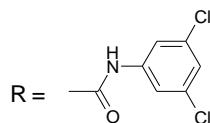
CHIRALPAK® ID

Amylose
tris(3-chlorophenylcarbamate)
immobilized on 5µm silica gel



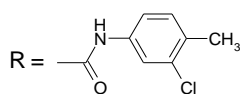
CHIRALPAK® IE

Amylose
tris(3,5-dichlorophenylcarbamate)
immobilized on 5µm silica gel



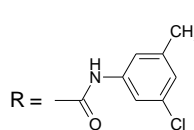
CHIRALPAK® IF

Amylose
tris(3-chloro-4 methylphenylcarbamate)
immobilized on 5µm silica gel.



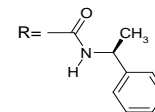
CHIRALPAK® IG

Amylose
tris(3-chloro-5 methylphenylcarbamate)
immobilized on 5µm silica



CHIRALPAK® IH

Amylose
tris[(S)-α-methylbenzylcarbamate]
immobilised on 5µm silica



Shipping solvent: **n-Hexane / alcohol solvent mixture**

All columns have been pre-tested before packaging. Test parameters and results, as well as the Column Lot Number, are included on a separate (enclosed) page.

THIS INSTRUCTION SHEET IS NOT APPLICABLE TO ANY OTHER DAICEL COLUMNS

Operating Instructions

	150 x 2.1 mm i.d. Analytical columns	50 x 4.6 mm i.d. 100 x 4.6 mm i.d. 150 x 4.6 mm i.d. 250 x 4.6 mm i.d. Analytical columns	250 x 10 mm i.d.① Semi-prep. columns	250 x 20 mm i.d.① 250 x 30 mm i.d.① Semi-prep. columns
Flow rate direction	As indicated on the column label			
Typical Flow rate	~ 0.1 - 0.2 mL/min	~ 0.5 - 1 mL/min	~ 5 mL/min	~ 18 mL/min (20mm) ~ 40 mL/min (30mm)
Pressure limitation	Should be maintained < 300 Bar (4350 psi) for maximum column life Adapt flow rates to column size.			
Temperature	0 to 40°C			

- ① When using a semi-preparative column, it is highly recommended to discard at least the first 150 ml (for 250 x 10 mm i.d) or 500 ml (for 250 x 20 mm i.d) of eluent at the beginning of each preparative work.

Method Development / Normal Phase

A - Mobile phases

CHIRALPAK® Immobilized-polysaccharide type columns be used with all ranges of organic miscible solvents, progressing from the traditional mobile phases used with other DAICEL columns (mixtures of alkanes/alcohol, pure alcohol or acetonitrile (CH₃CN)) to mobile phases containing methyl *tert*-butyl ether (MtBE), tetrahydrofuran (THF), dichloromethane (DCM), chloroform (CHCl₃), ethyl acetate (EtOAc) among others.

B - Method Development - Screening

When developing methods we would recommend a screening approach.

1. The conditions described in Table 1 should be used as a Primary Screening.
2. If the compound or compound series are not soluble in any of these mobile phases, we recommend progressing directly to the Secondary Screening (Table 2).

Table 1. Immobilized Primary Screening Solvents

Primary solvent mixtures	Alkane①/2-PrOH	Alkane①/EtOH	Alkane①/MtBE/EtOH②	Alkane①/THF③	Alkane/DCM④/EtOH
Typical starting conditions	80:20	80:20	0:98:2	70:30	50:50:2
Advised optimisation range	99:1 to 50:50	99:1 to 50:50	80:20:0 to 0:40:60	95:5 to 0:100	85:15:0 to 0:80:20

- ① Alkane = n-Hexane, iso-Hexane or n-Heptane. Some small selectivity differences may sometimes be found.
 ② In absence of alkane, methanol is more efficient than ethanol when combined with MtBE.
 ③ In the case of no environmental restrictions, **use of DCM is preferred to THF** in terms of better enantioselectivity that the former may induce.
 ④ For excessively retained samples, addition of ethanol up to 20% in pure DCM would be helpful.

If a suitable chiral separation is not found using the Immobilized Primary Screening strategy, we recommend an Immobilized Secondary Screening to be applied using the following conditions:

Table 2. Immobilized Secondary Screening Solvents

Secondary solvent mixtures	EtOAc ^① /Alkane ^②	CH ₃ CN ^③ /Alcohol ^④
Typical starting conditions	50:50	100:0
Advised optimisation range	20:80 to 100:0	100:0 to 0:100

- ① Alcohols (④) or THF can be added into EtOAc to enhance the eluting strength for strongly retained compounds.
- ② Alkane: n-Hexane, iso-Hexane or n-Heptane. Some small selectivity differences may sometimes be found.
- ③ Transfers between alkane mixtures and CH₃CN are preferably made with a transition in alcohol in order to avoid miscibility issues.
- ④ Alcohol: MeOH, EtOH and 2-PrOH.

Note: All solvent proportions indicated in this manual are by volume.

C – General Comments

- ⇒ Additional solvent combinations such as CHCl₃/Alkane, 1,4-Dioxane/Alkane, Toluene/Alkane or Acetone/Alkane can also be investigated with these columns.
- ⇒ The typical starting conditions represent the mobile phases of upper middle eluting strength. Under such conditions, most of the analytes can be eluted within a reasonable time range with a good probability of full resolution of the enantiomers.
- ⇒ Toluene, MtBE and chlorinated solvents can be used in their pure form as the mobile phase.
- ⇒ For fast eluting solvents, such as THF, we recommend to add alkane in order to modulate the retention.
- ⇒ Detection with a regular UV detector may become difficult depending on a combination of sample and mobile phase (e.g. EtOAc, high percentages of DCM). In these cases an alternative detector, such as RI detector or ELSD (Evaporative Light Scattering Detector), may be more effective than the UV detector.

D – Additives

For basic or acidic samples, it is necessary to incorporate an additive into the mobile phase in order to optimise the chiral separation.

- It has been found that certain amines, such as EDA and AE induce much better behaviour for certain basic compounds than the most commonly used DEA.

☞ The addition of a low percentage of an alcohol (e.g. 2% EtOH or MeOH) in the mobile phase may be helpful to ensure the miscibility of EDA and AE with the low polarity mobile phases.

Basic Samples require Basic additives	Acidic Samples require Acidic additives
Diethylamine (DEA) 2-Aminoethanol (AE)● Ethylenediamine (EDA)● Butyl amine (BA)	Trifluoroacetic acid (TFA) Acetic acid Formic acid
< 0.5% Typically 0.1%	< 0.5% Typically 0.1%

⇒ **STRONGLY BASIC solvent additives or sample solutions MUST BE AVOIDED, because they are likely to damage the silica gel used in this column.**

Column Care / Maintenance

- The use of a guard cartridge is highly recommended for maximum column life.
- Samples should preferably be dissolved in the mobile phase. The mobile phase and the sample solution should be filtered through a membrane filter of approximately 0.5µm porosity to ensure that there is no precipitate before using.

☞ Column cleaning and regeneration procedures

Following extensive use of the column in multiple solvents there may be a change in separation reproducibility. In order to ensure consistent performance, a regeneration method may be implemented to eliminate any change in chiral recognition due to the history of the column (mobile phases, additives...).

- Flush with ethanol at 0.5 ml/min(*) for 30 min, followed by 100% THF at 0.5 ml/min(*) for 2 hours.
- Flush with ethanol at 0.5 ml/min(*) for 30 min and then equilibrate with alkane/ethanol = 80/20 (v/v) prior to retesting the column as described in the CoA delivered together with the column.

If this is not successful, then try with 100% N,N-dimethylformamide (DMF) or N,N-dimethylacetamide (DMAC) at 0.3 ml/min^(*) for 3 hours instead of the THF flush.

() Recommended flow rate for analytical columns (4.6mm i.d.). For semi-prep. columns, the flow rate should be adjusted according to the column diameter*

x 5	for a 10mm i.d. column;
x 20	for a 20mm i.d. column;
x 40	for a 30mm i.d. column

⇒ This procedure is also recommended for switching between reversed phase and normal phase.

▶ If the DMF regeneration is unsuccessful –**especially on CHIRALPAK® IB and IG columns**– then it may be necessary to apply Ethylacetate (EtOAc) for 3 hours at 1ml/min^(*) or even store the columns (IB and IG) for 48 hours in 100% EtOAc before equilibrating and re-testing as described in the CoA delivered together with the column.

Column storage

- For column storage, remove the acidic or basic additives by flushing the column with the same mobile phase without the additive. Columns can be stored end capped with additive-free mobile phases.

Operating these columns in accordance with the guidelines outlined here will result in a long column life.

⇒ If you have any questions about the use of these columns, or encounter a problem, contact:

In the USA: questions@chiraltech.com or call 800-6-CHIRAL

In the EU: cte@chiral.fr or call +33 (0)3 88 79 52 00

In India: chiral@chiral.daicel.com or call +91-40-2338-3700