

Lifitegrast

CHROMATOGRAPHIC CONDITIONS

Column: CHIRALPAK® IE-3 [4.6 x 150 mm, 3 μm]

Part No: 89525

Mobile phase: 0.1% TFA in (Water : MeOH 5/95, v/v)

Flowrate: 1.0 mL/min

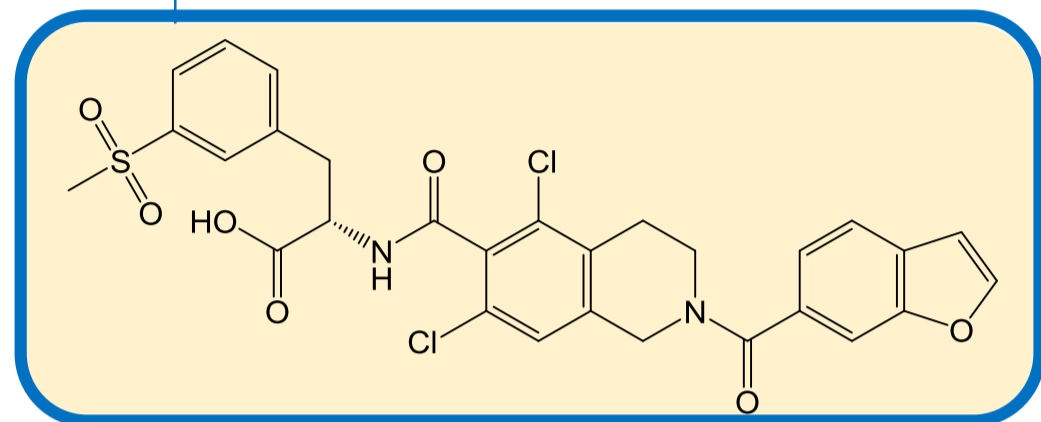
Column Oven Temperature: 25 °C

UV Detection: 260 nm

Sample Concentration: 1.0 mg/mL

Diluent: Mobile phase

Injection Volume: 10 μL



SEPARATION PERFORMANCE

tR ₁ : 6.2	N ₁ : 5697	T ₁ : 1.3			
tR ₂ : 8.0	N ₂ : 7469	T ₂ : 1.1	α: 1.7	Rs: 5.0	

