

Bupivacaine

CHROMATOGRAPHIC CONDITIONS

Column: CHIRALCEL® OD-3R [150 mm x 4.6 mm i.d., 3 µm]

Part No: 14824

Mobile Phase: A - aq. 10 mM ammonium acetate pH 6.0 adjusted
glacial acetic acid

B - ACN

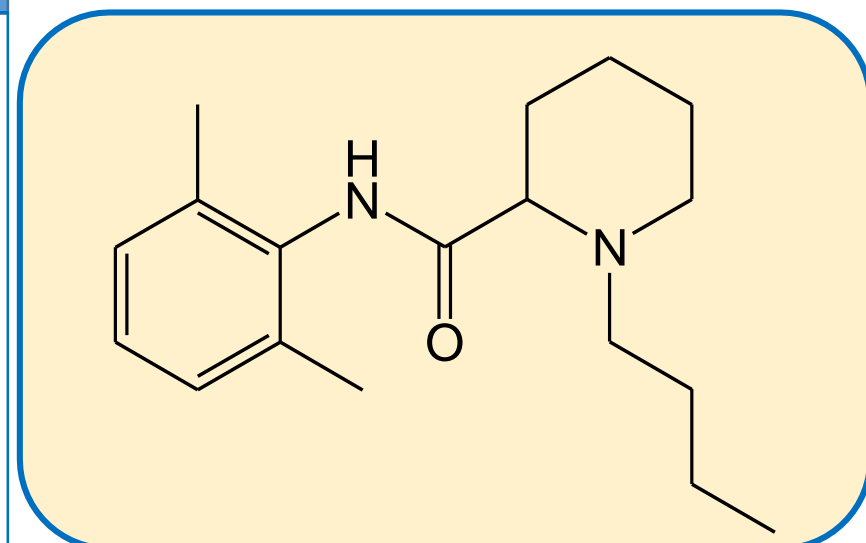
Time (mins) / %B - 0/20, 10/80, 15/80, 15.1/20, 20/20

Flow Rate: 1.0 ml/min

Column Oven Temperature: 40°C

UV Wavelength: 215 nm Diluent: Water/MeOH (1:1)

Sample Concentration: 0.5 mg/ml



SEPARATION PERFORMANCE

| | | | |
|-----------------|---------------|-------------|-------------|
| t_{R1} : 7.26 | N_1 : 19164 | T_1 : 0.8 | |
| t_{R2} : 7.56 | N_2 : 11900 | T_2 : 2.2 | R_s : 1.2 |

