

Netarsudil

CHROMATOGRAPHIC CONDITIONS

Column: CHIRALPAK® IG-U [3.0 x 50 mm, 1.6 µm]
Part No: 87U82

Mobile phase: Methanol/ Acetonitrile/ Diethylamine
[(50/ 50/ 0.1, v/ v/ v)]

Flowrate: 0.3 mL/min

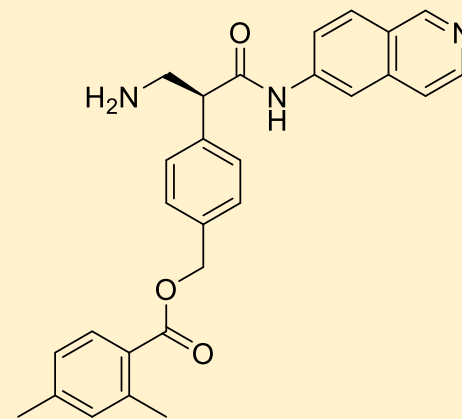
Column Oven Temperature: 25°C

UV Detection: 254 nm

Sample Concentration: 0.1 mg/mL

Diluent: Mobile phase

Injection Volume: 3 µL



SEPARATION PERFORMANCE

t _{R1} : 1.9	N ₁ : 571	T ₁ : 1.7	
t _{R2} : 3.8	N ₂ : 779	T ₂ : 1.5	Rs: 4.6

