

DAICEL CHIRAL TECHNOLOGIES GLOBAL APPLICATION CENTRE

Metformin+Linagliptin

CHROMATOGRAPHIC CONDITIONS

Column: CHIRALPAK® IG-3 [4.6 x 250 mm, 3 µm] Part No: 87525

Mobile phase: Methanol/ Acetonitrile/ Ethylenediamine

(80/20/ 0.1, v/ v/ v)

Flowrate: 1.0 mL/min

Column Oven Temperature: 40 °C

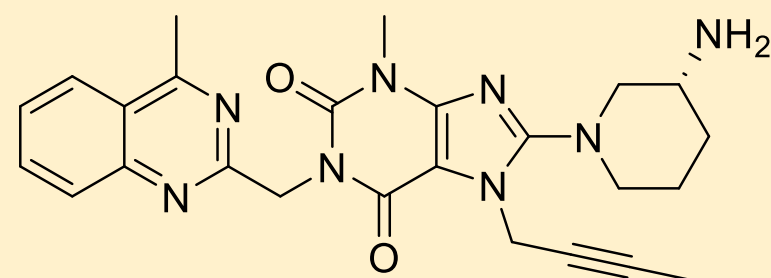
UV Detection: 295 nm

Diluent: Methanol

Sample Concentration: Linagliptin: 1.0 mg/mL

Metformin: 340 mg/mL

Injection Volume: 10 µL



Linagliptin

SEPARATION PERFORMANCE

t_{R1} : 7.2	N_1 : 5226	T_1 : 1.6	
t_{R2} : 8.6	N_2 : 2574	T_2 : 1.3	R_s : 2.5

