

Saxagliptin

CHROMATOGRAPHIC CONDITIONS

Column: CHIRALPAK® IG [4.6 x 250 mm, 5 µm]

Part No: 87325

Mobile Phase: Ethanol : ACN: Isopropylamine (20/80/0.1, v/v/v)

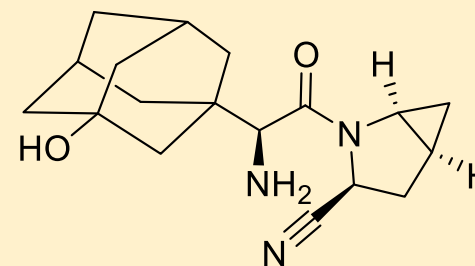
Column Oven Temperature: 25 °C

UV Detection: 220nm

Flow Rate: 1.0 ml/min

Diluent: Mobile Phase

Sample Concentration: 5.0 mg/ml



tR ₁ : 5.8	N ₁ : 9906	T ₁ :1.0	
tR ₂ : 6.5	N ₂ : 10562	T ₂ :1.2	Rs: 3.1
tR ₃ : 12.1	N ₃ : 6097	T ₃ :1.1	Rs: 12.8
tR ₄ : 15.7	N ₄ : 4126	T ₄ :1.3	Rs: 4.6

